



Monoclonal B-Cell Lymphocytosis

Guideline

Recommendations from the society for diagnosis and therapy of haematological and oncological diseases

Publisher

DGHO Deutsche Gesellschaft für Hämatologie und
Medizinische Onkologie e.V.
Alexanderplatz 1
D-10178 Berlin

Executive chairman: Prof. Dr. med. Mathias Freund

Phone: +49 (0)30 27 87 60 89 - 0

Fax: +49 (0)30 27 87 60 89 - 18

info@dgho.de

www.dgho.de

Contact person

Prof. Dr. med. Bernhard Wörmann
Medical superintendent

Source

www.onkopedia-guidelines.info

The information of the DGHO Onkopedia Web Site is not intended or implied to be a substitute for professional medical advice or medical care. The advice of a medical professional should always be sought prior to commencing any form of medical treatment. To this end, all component information contained within the web site is done so for solely educational purposes. DGHO Deutsche Gesellschaft für Hämatologie und Onkologie and all of its staff, agents and members disclaim any and all warranties and representations with regards to the information contained on the DGHO Web Site. This includes any implied warranties and conditions that may be derived from the aforementioned web site information.

Table of contents

1 Definition and Basic Information.....	2
2 Incidence Rate.....	2
3 Risk of Progression	2
4 Diagnosis	3
5 Follow-Up	3
6 References	4
7 Affiliations.....	5

Monoclonal B-Cell Lymphocytosis

Status: February 2012

Authors: Karl-Anton Kreuzer, Monika Brüggemann, Alexander Egle, Michael Gregor, Clemens-Martin Wendtner

1 Definition and Basic Information

Monoclonal B-cell lymphocytosis (MBL) is defined by the presence of a monoclonal B-cell population in the peripheral blood, with [2]:

- light-chain restriction (kappa:lambda of <3:1 or <0.3:1), *or*
- monoclonal immunoglobulin heavy-chain gene rearrangement, *or*
- 25% B cells with low or absent expression of surface immunoglobulins, *or*
- B-cell population with an aberrant immunophenotype.

These findings must be reproducible and stable for at least 3 months.

However, MBL is ruled out by the following criteria:

- lymphadenopathy or organomegaly, *or*
- associated autoimmune disease (e.g. AIHA) or infectious complications, *or*
- B lymphocytes >5 G/l in the peripheral blood, *or*
- any other feature of manifested lymphoproliferative neoplasm.

In 80% of the cases MBL displays a CLL phenotype ("CLL-like MBL": light-chain restriction, CD5⁺/CD19⁺/CD20^{low}/CD23⁺/Ig^{low}). The two most deviating phenotypes are MBL with the atypical CLL phenotype (light-chain restriction, CD5⁺/CD19⁺/CD20⁺/CD23⁺/Ig⁺ or CD5⁺/CD19⁺/CD20^{low}/CD23⁻/Ig⁺) and MBL with the non-CLL phenotype (light-chain restriction, CD5⁻/CD19⁺/CD20⁺/Ig⁺) [3].

2 Incidence Rate

MBL is detectable in the general population at a rate of approx. 0.5-5% [4]. Prevalence depends on the diagnostic method and the age of the patient. It increases with increasing age and is also markedly higher in groups of first-degree relatives with a history of manifest lymphoproliferative disease.

3 Risk of Progression

The risk of MBL transforming into a therapy requiring CLL or any other malignant lymphoma amounts to rate of approx. 1-2% per year [7]. Epidemiological studies confirm individual variations in the likelihood of progression [5, 6]. Seminal stud-

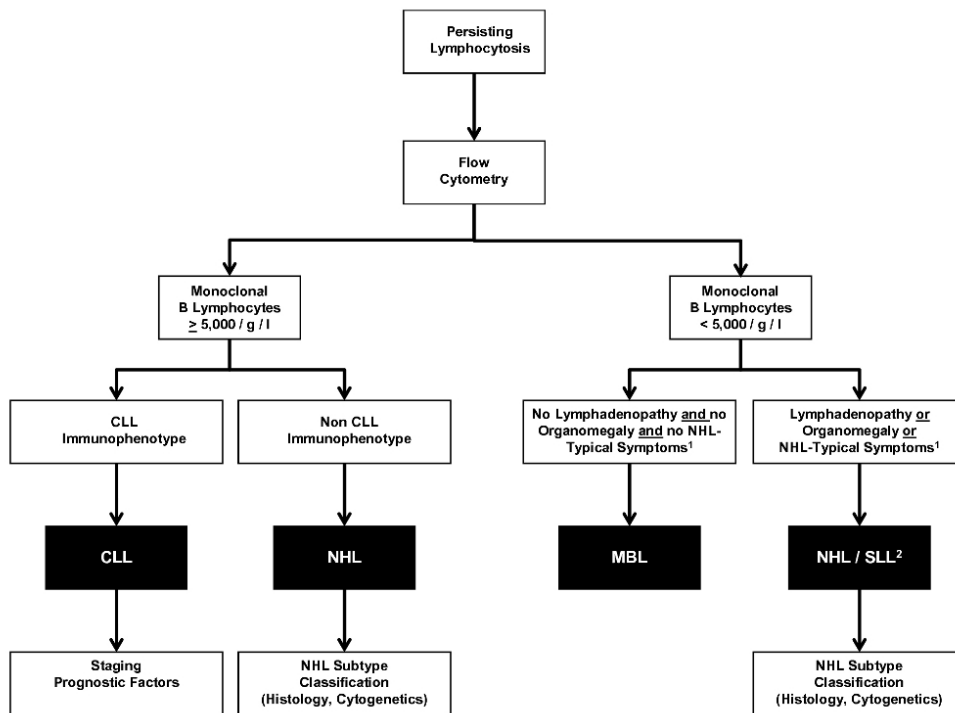
ies on the other hand, demonstrated that almost every CLL is preceded by MBL [1].

Parameters of progression in CLL patients are not applicable for a reliable estimation of the likelihood of progression of a "CLL-type MBL". It can merely be stated that the prevalence of CLL-typical cytogenetic (e.g. del(13q)) or molecular genetic lesions (e.g. IgHV mutation status) increases with increasing lymphocyte counts [4, 8]. Despite the fact that larger studies on this subject are still unavailable a monoclonal B-cell lymphocytosis of ≥ 1.9 G/l may be currently regarded as a practically relevant threshold limit value (see below).

4 Diagnosis

The diagnosis of MBL is often incidental. However, if there are specific suspicious facts which indicate a lymphoproliferative disease, particularly a persisting lymphocytosis, the diagnosis of MBL usually results from the according diagnostics by exclusion. A diagnostic algorithm is presented in the overview below, see Figure 1.

Figure 1: Differential Diagnostics of B-Cell Lymphocytosis



Legend:

¹ NHL-typical symptoms: B symptoms (fever, night sweats, weight loss), autoimmune cytopenias, opportunistic infections

² The aleukemic form of CLL is classified as small-cell lymphocytic lymphoma (SLL).

5 Follow-Up

The objects pursued by follow-up examinations consist first of all in the exclusion of a treatment requiring lymphoproliferative disease at an early stage, and the as

early as possible identification of a development which is directed toward a prognostically unfavorable or treatment requiring disease.

As 90% of the individuals who have MBL and a stable lymphocytosis of <1.9 G/l do not display progression over a period of five years, a single follow-up examination appears to be sufficient for this group, by means of immunophenotyping 6-12 months after the initial diagnosis [5], see Tab 1.

Individuals with a lymphocytosis of ≥ 1.9 G/l display a high risk of progression, wherefore regular examinations in intervals of 6-12 months appear to be indicated for this group. In addition to immunophenotyping, a physical examination should also proceed in these cases, perhaps supplemented by sonography of the abdomen inclusive of lymph-node sonography, in order to identify a lymphadenopathy or organomegaly [5].

Time	Group	Interval	Method
Initial diagnosis	All	once	Immunophenotyping, clinical examination
Course	< 1.9 G B cells	once after 6-12 months	Differential blood cell count, perhaps immunophenotyping
	≥ 1.9 G/l B cells	regularly, every 6-12 months	Differential blood cell count, perhaps immunophenotyping, clinical examination

In case the number of B cells exceeds a value of ≥ 5.0 G/l, or should symptoms typical of a lymphoma appear additionally (e.g. lymphadenopathy, splenomegaly, autoimmune cytopenia), a manifest lymphoproliferative disease (CLL etc.) will have to be diagnosed. See elsewhere other Onkopedia Guidelines for further diagnostics.

6 References

1. Landgren O, Albitar M, Ma W et al. B-cell clones as early markers for chronic lymphocytic leukemia. *N Engl J Med* 360:659-667, 2009. [PMID: 19213679](#)
2. Marti GE, Rawstron AC, Ghia P et al. Diagnostic criteria for monoclonal B-cell lymphocytosis. *Br J Haematol* 130:325-332, 2005. [DOI: 10.1111/j.1365-2141.2005.05550.x](#)
3. Mulligan CS, Thomas ME, Mulligan SP. Monoclonal B-cell lymphocytosis and chronic lymphocytic leukemia. *N Engl J Med*. 2008;359:2065-2066, 2008. [PMID: 18987375](#)
4. Rawstron AC, Bennett FL, O'Connor SJ et al. Monoclonal B-cell lymphocytosis and chronic lymphocytic leukemia. *N Engl J Med* 359:575-583, 2008. [PMID: 18687638](#)
5. Rawstron AC. Monoclonal B-cell lymphocytosis. *Hematology Am Soc Hematol Educ Program* 430-439, 2009. [PMID: 20008229](#)
6. Rossi D, Sozzi E, Puma A et al. The prognosis of clinical monoclonal B cell lymphocytosis differs from prognosis of Rai 0 chronic lymphocytic

leukaemia and is recapitulated by biological risk factors. Br J Haematol 146:64-675, 2009. DOI: [10.1111/j.1365-2141.2009.07711.x](https://doi.org/10.1111/j.1365-2141.2009.07711.x)

7. Shanafelt TD, Ghia P, Lanasa MC et al. Monoclonal B-cell lymphocytosis (MBL): biology, natural history and clinical management. Leukemia 24:512-520, 2010. DOI: [10.1038/leu.2009.287](https://doi.org/10.1038/leu.2009.287)
8. Shanafelt TD, Kay NE, Rabe KG et al. Brief report: natural history of individuals with clinically recognized monoclonal B-cell lymphocytosis compared with patients with Rai 0 chronic lymphocytic leukemia. J Clin Oncol 27:3959-3963, 2009. DOI: [10.1200/JCO.2008.21.2704](https://doi.org/10.1200/JCO.2008.21.2704)

7 Affiliations

PD Dr. med. Karl-Anton Kreuzer

Klinik I für Innere Medizin
Klinikum der Universität zu Köln
Kerpener Straße 62
D-50937 Köln
Phone: +49 / 221 / 478-97626
karl-anton.kreuzer@uni-koeln.de

PD Dr. med. Monika Brüggemann

II. Medizinische Klinik und Poliklinik
Universitätsklinikum Schleswig-Holstein, Campus Kiel
Chemnitzstraße 33
D-24116 Kiel
Phone: +49 / 431 / 1697-5235
m.brueggemann@med2.uni-kiel.de

PD Dr. med. Alexander Egle

3. Medizinische Universitätsklinik für Hämatologie, internistische Onkologie, Hämostaseologie, Infektiologie und Rheumatologie
Universitätsklinikum Salzburg
Müllnerhauptstraße 48
A-5020 Salzburg, Österreich
Phone: +43 / 662 / 4482- 57700
a.egle@salk.at

Dr. med. Michael Gregor

Hämatologische Abteilung
Luzerner Kantonsspital
Ch-6000 Luzern 16
Phone: +41 / 41 / 205-5313
michael.gregor@ksl.ch

Prof. Dr. med. Clemens-Martin Wendtner

Klinik für Hämatologie, Onkologie, Immunologie, Palliativmedizin, Infektiologie
und Tropenmedizin
Klinikum Schwabing
Kölner Platz 1
D-80804 München
Phone: +49 / 89 / 3068-2228
clemens.wendtner@klinikum-muenchen.de