

A photograph of the St. Hedwig's Cathedral in Berlin, Germany, showing its ornate facade, a large green dome, and a golden figure on top. The building is surrounded by lush green trees and a blue sky with light clouds. In the foreground, there are decorative stone urns and a balustrade.

Tailoring Documentation for Stakeholder Groups on the Example of a Dashboard

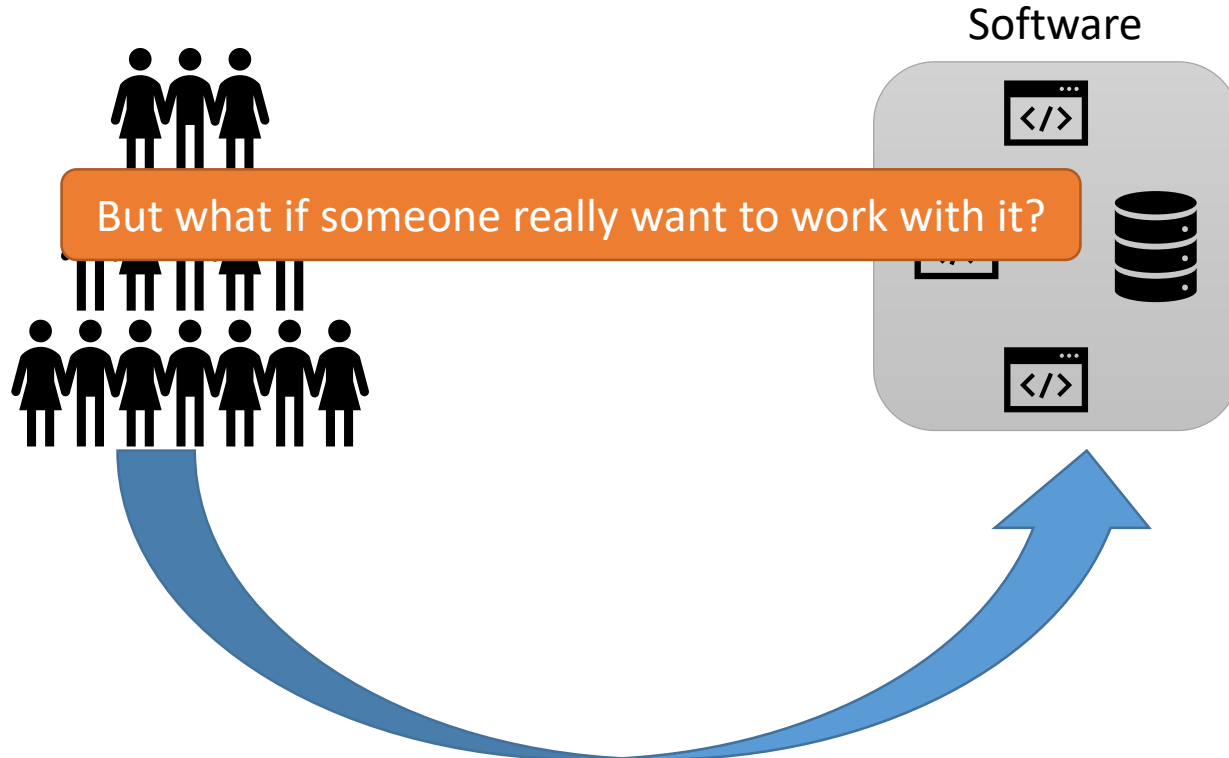
Jan Bernoth

DaMaLOS @ ESWC 2023

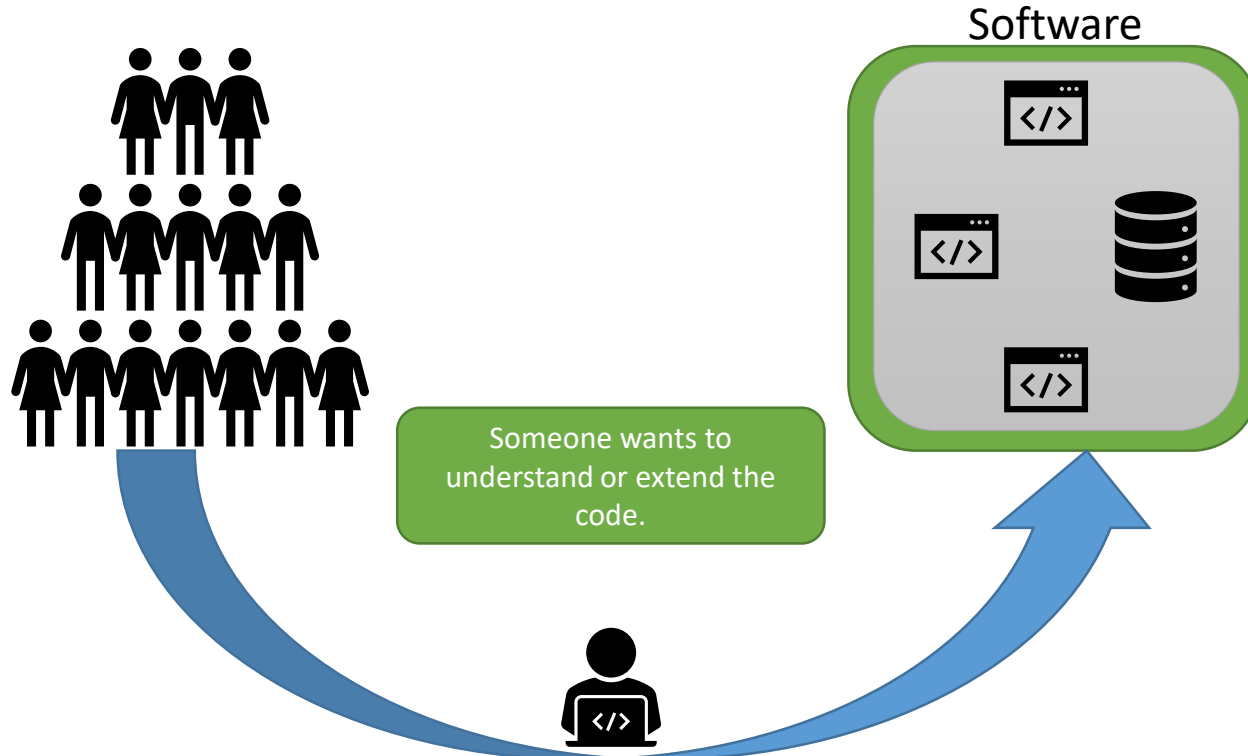
Motivation



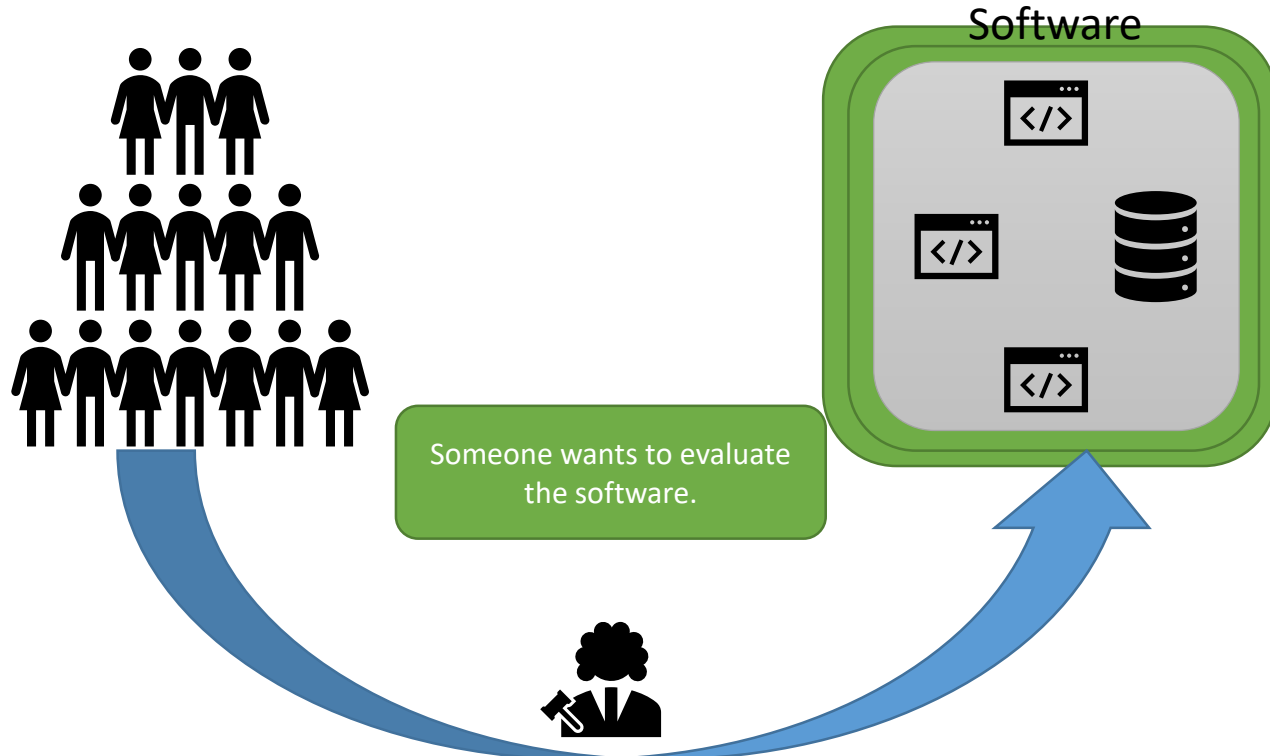
Motivation



Motivation



Motivation



WiKoDa – A Dashboard for Science Communication



It reads articles from newspapers and extracts topics relevant to science.



It displays on the dashboard which topics are being discussed more frequently.

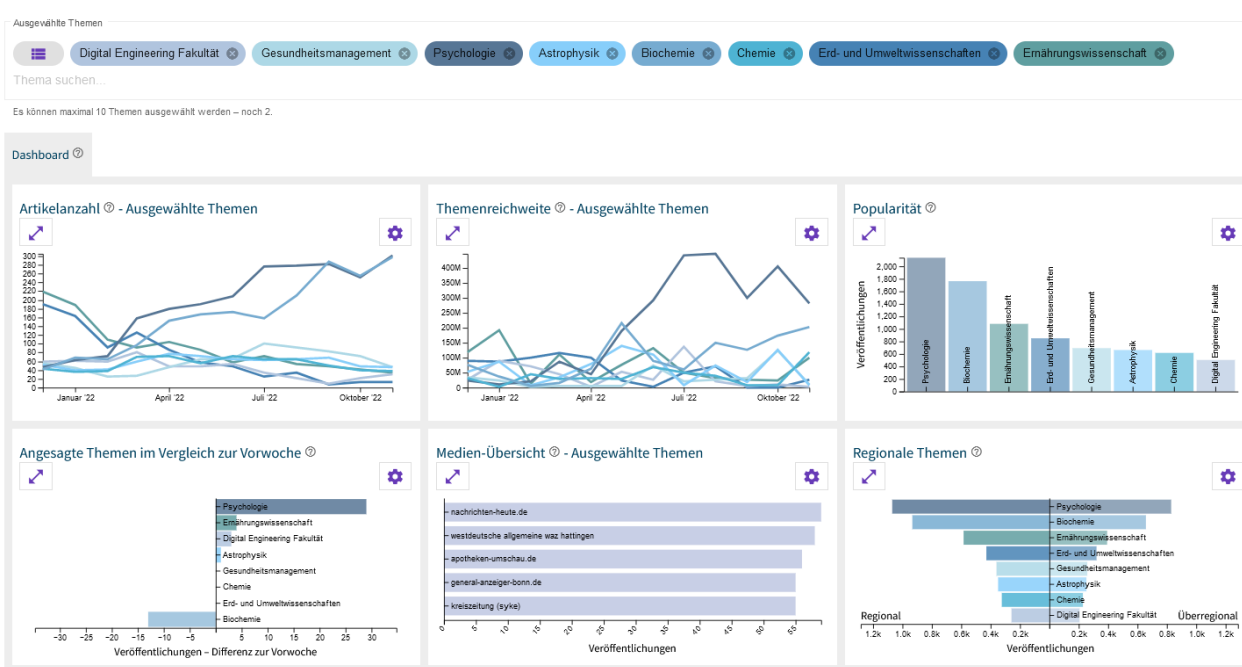


Scientists could adjust their science communication strategy based on the information.

WiKoDa – A Dashboard for Science Communication



Dashboard zur Unterstützung von Wissenschaftskommunikation

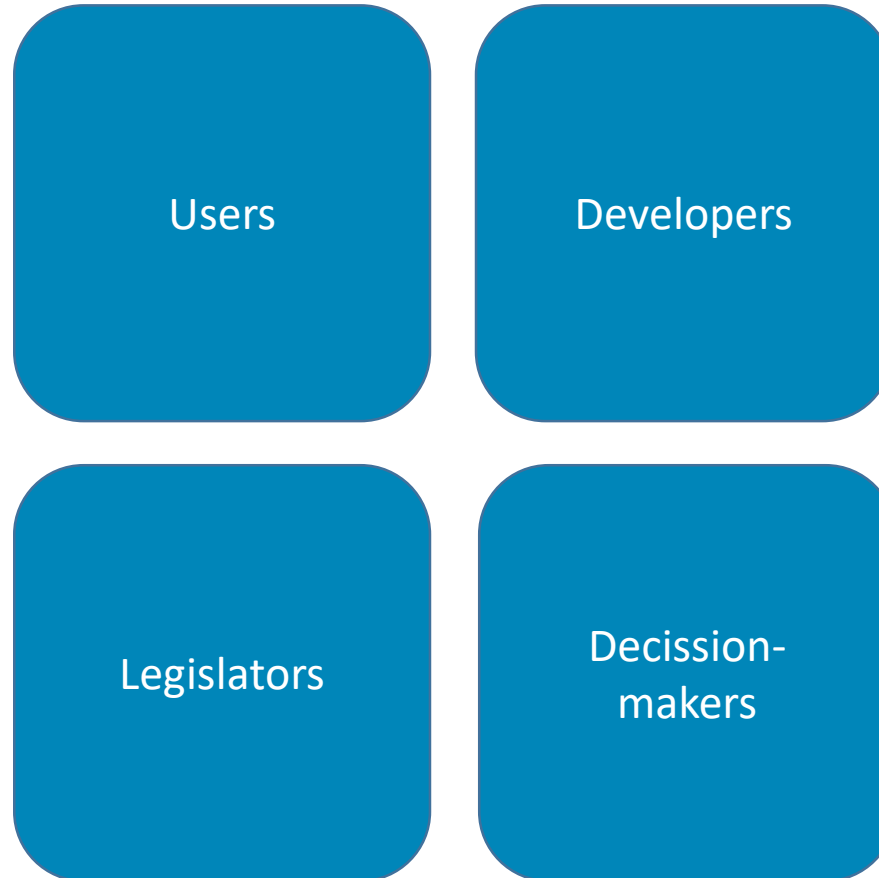


Landing Page with link to the demo



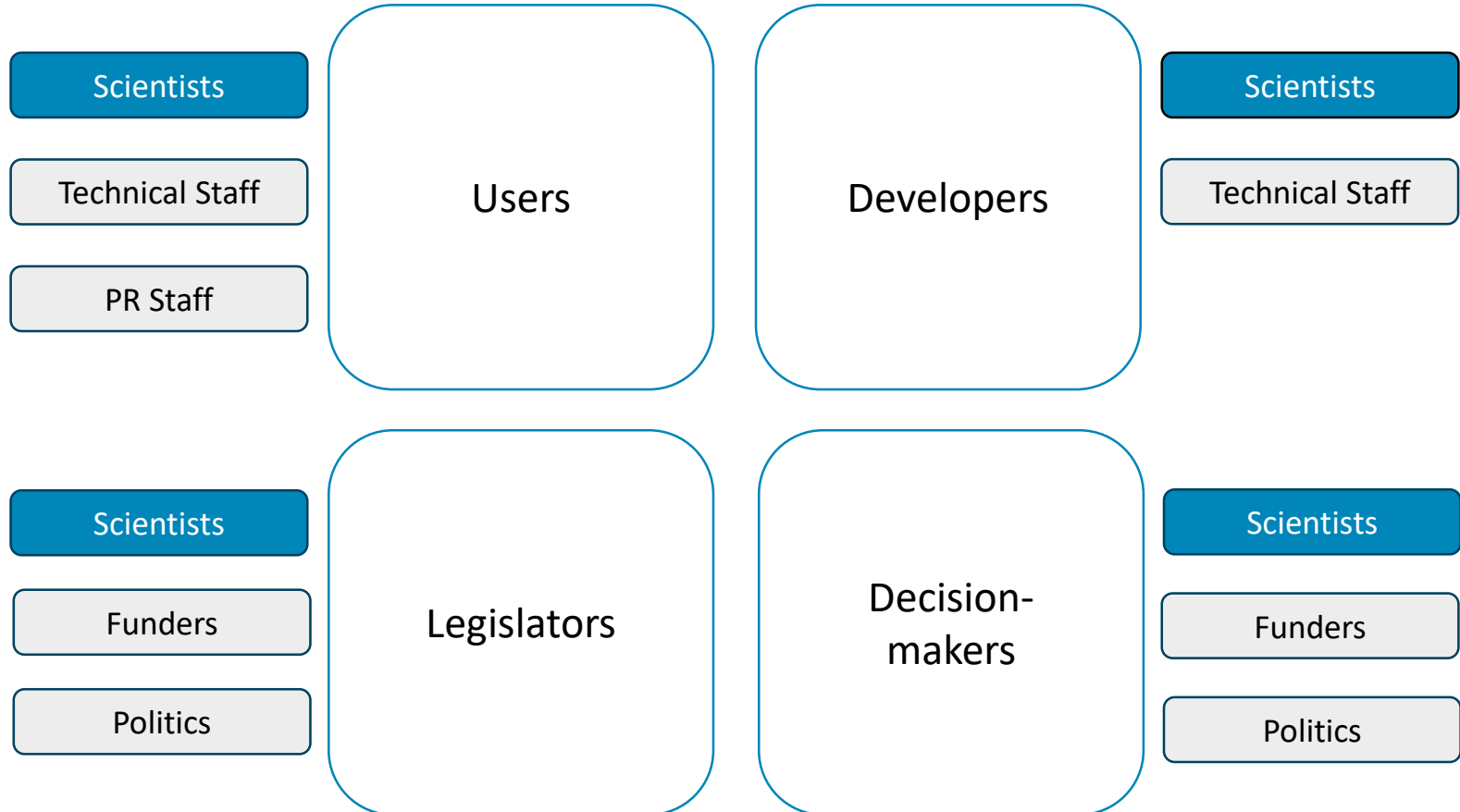
<https://wikoda.pages.uni-potsdam.de/wikoda/>

Defining Stakeholders – Baseline Groups



Source: Sharp, H.; Finkelstein, A.; Galal, G. (1999) Stakeholder identification in the requirements engineering process.

Stakeholders of WiKoDa



Example Documentation for Developers

To Code

- Code Comment
 - Commit Messages
 - (Unit) Tests
-

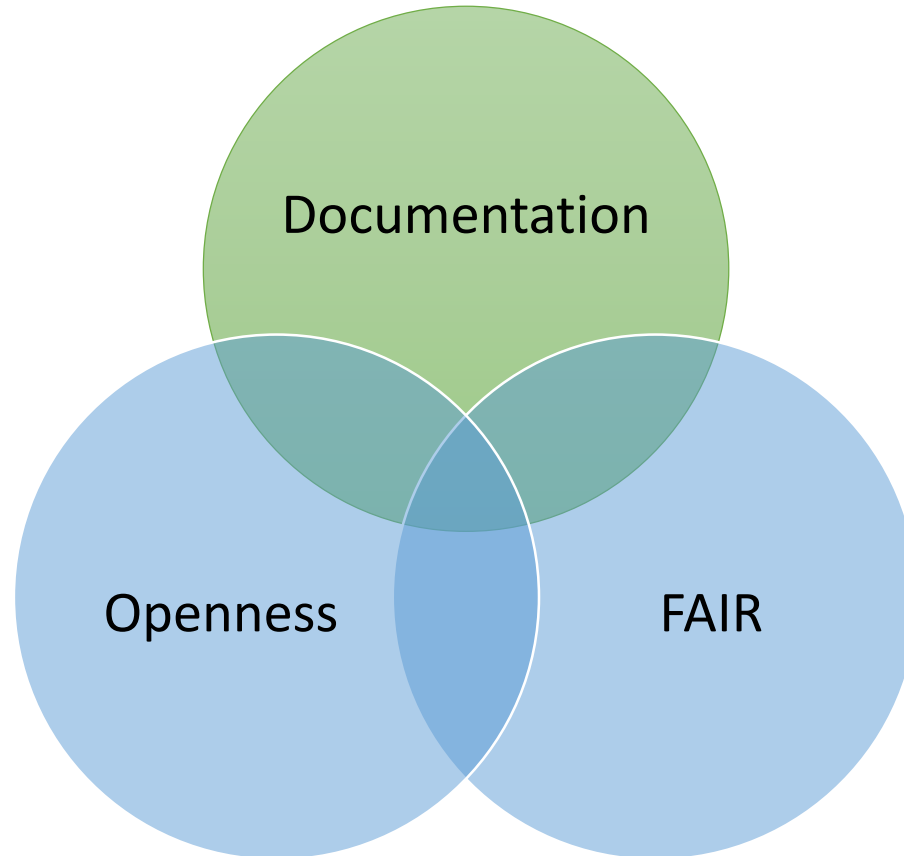
To Run

- Licence
 - Docker
 - Tickets
 - Wiki / User Manual
 - README
-

To Write About

- Scientific Publications
- Citation.cff
- Open Science Framework (DOI)

Documentation as another dimension



Tailoring Documentation for Stakeholder Groups on the Example of a Dashboard.

Jan Bernoth, M. Sc.

PhD Candidate

Institute of Computer Science

Jan.Bernoth@uni-potsdam.de

ORCID: 0000-0002-4127-0053

Mastodon: @jbernoth@troet.cafe

